

2
 FINANCIAL STATEMENTS
 4.00
 29.00
 1.00
 1.00

Handwritten notes and signatures at the top of the page.

RECORDED AND INDEXED
 PUBLIC RECORDS DEPARTMENT
 BREVARD COUNTY, FLORIDA

FIRST AMENDMENT TO THE DECLARATION
 OF CONDOMINIUM FOR SUNRISE VILLAGE,
 A CONDOMINIUM

THIS FIRST AMENDMENT TO THE DECLARATION OF CONDOMINIUM FOR SUNRISE VILLAGE, A CONDOMINIUM, is made as of the 3rd day of March, 1989, by SUNRISE LANDING DEVELOPMENT GROUP, INC., a Florida corporation, whose address is P.O. Box 8258, Maitland, Florida 32751, who is hereinafter referred to as the "Developer."

W I T N E S S E T H:

WHEREAS, the Declaration of Condominium for SUNRISE VILLAGE, a Condominium, was recorded on the 3rd day of March, 1989, in Official Records Book 2982, Page 4671, Public Records of Brevard County, Florida (hereinafter referred to as the "Condominium");

WHEREAS, attached to said Declaration of Condominium were Exhibit "A" and Exhibit "B", which contained the survey, plot plan, and floor plans for the Condominium;

WHEREAS, certain improvements described in the Declaration as depicted on said Exhibit "A" and Exhibit "B" were not complete at the time of recording of said Declaration;

AND WHEREAS, the Developer and the Surveyor, Frank A. Raymond, P.L.S. #4007 of the State of Florida, are hereby desirous of certifying as to the substantial completion of certain additional improvements to the Condominium.

NOW, THEREFORE, SUNRISE LANDING DEVELOPMENT GROUP, INC., a Florida corporation, as the Developer of Sunrise Village, a Condominium, hereby submits the Certificate of Surveyor, together with revised Sheets 1 of 12, 2 of 12, 3 of 12, 4 of 12, 6 of 12 and 12 of 12, attached hereto as Exhibit "A" and expressly incorporated herein. Said Certificate of Surveyor shall be supplemental to and in addition to the Certificate of Surveyor and revised Sheets depicted in Exhibit "A" and Exhibit "B" to the Declaration of Condominium for SUNRISE VILLAGE, a Condominium.

IN WITNESS WHEREOF, the undersigned authorized corporate official of SUNRISE VILLAGE DEVELOPMENT GROUP, INC., a Florida

638763

89 MAR -9 AM 10:26

Enterprise title
 1051 Winderly Pl.
 Maitland, Fl. 32751

C MXL
 REAMD01
 03/07/89.2

OFF. REC.
 0000

1

PAGE
 4317

corporation, has set his hand and the corporate seal of the said corporation the day, month, and year first written above.

Signed, sealed and delivered in the presence of:

SUNRISE VILLAGE DEVELOPMENT GROUP, INC., a Florida corporation

Joseph K. Grant
Kristen H. Huey

BY: *[Signature]*
ALAN H. GINSBURG
Vice President

(CORPORATE SEAL)

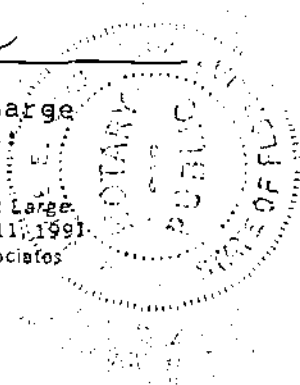
STATE OF FLORIDA

COUNTY OF ORANGE

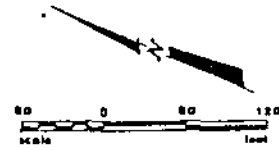
The foregoing instrument was acknowledged before me this 8th day of March, 1989, by Alan H. Ginsburg, as Vice President of Sunrise Village Development Group, Inc., a Florida corporation on behalf of the corporation.

Joseph K. Grant
NOTARY PUBLIC
State of Florida at Large
My Commission Expires:

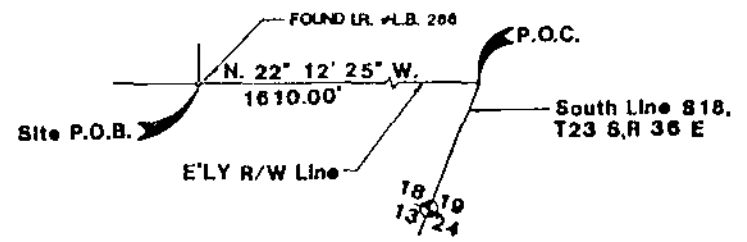
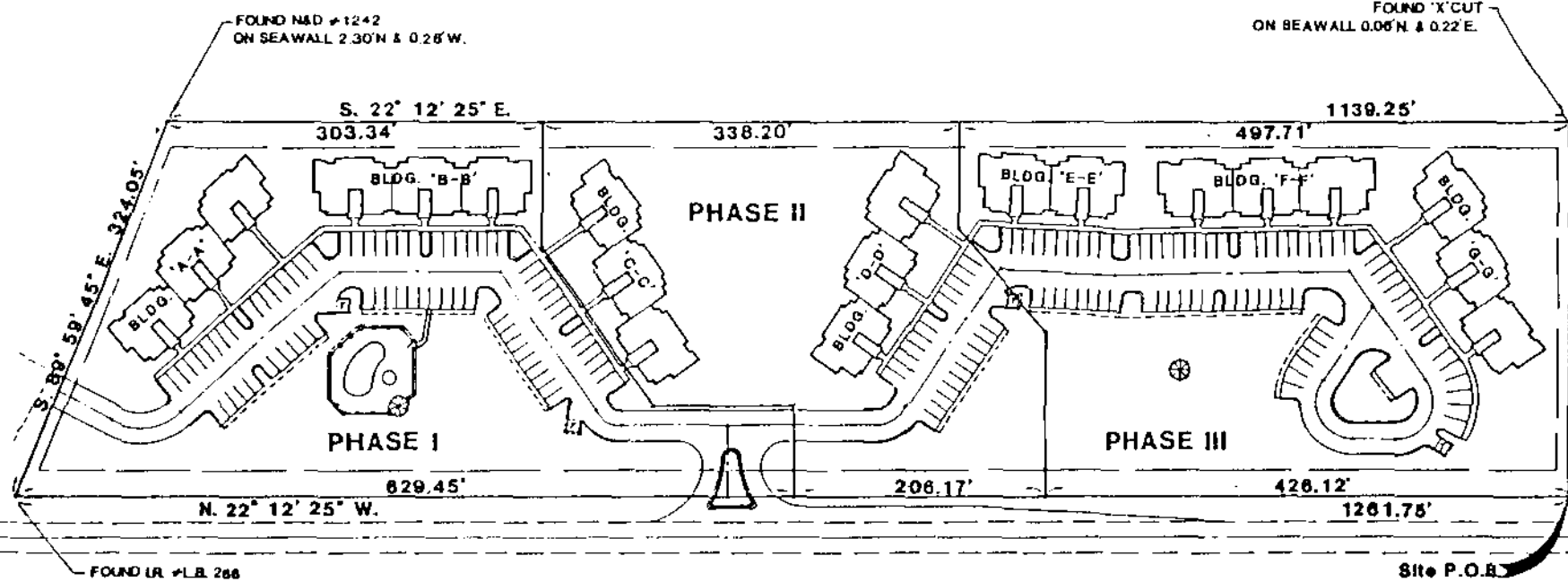
Notary Public, State of Florida at Large
My Commission Expires February 11, 1991
Bonded thru Huckleberry & Associates



SUNRISE VILLAGE, A CONDOMINIUM



INDIAN RIVER



PAGE 4320
2983
OFF. REC. S. 67° 47' 35\"/>

PHOENIX ENGINEERING ASSOCIATES, INC.
2555 TEMPLE TRAIL, SUITE 202
WINTER PARK, FL 32789 (407) 740-7202

Accuright Surveys
2012 E. ROBINSON ST.
ORLANDO, FL. 32803
PHONE (407) 884-8314

EXHIBIT "B"
SHEET 2 of 12 SHEETS

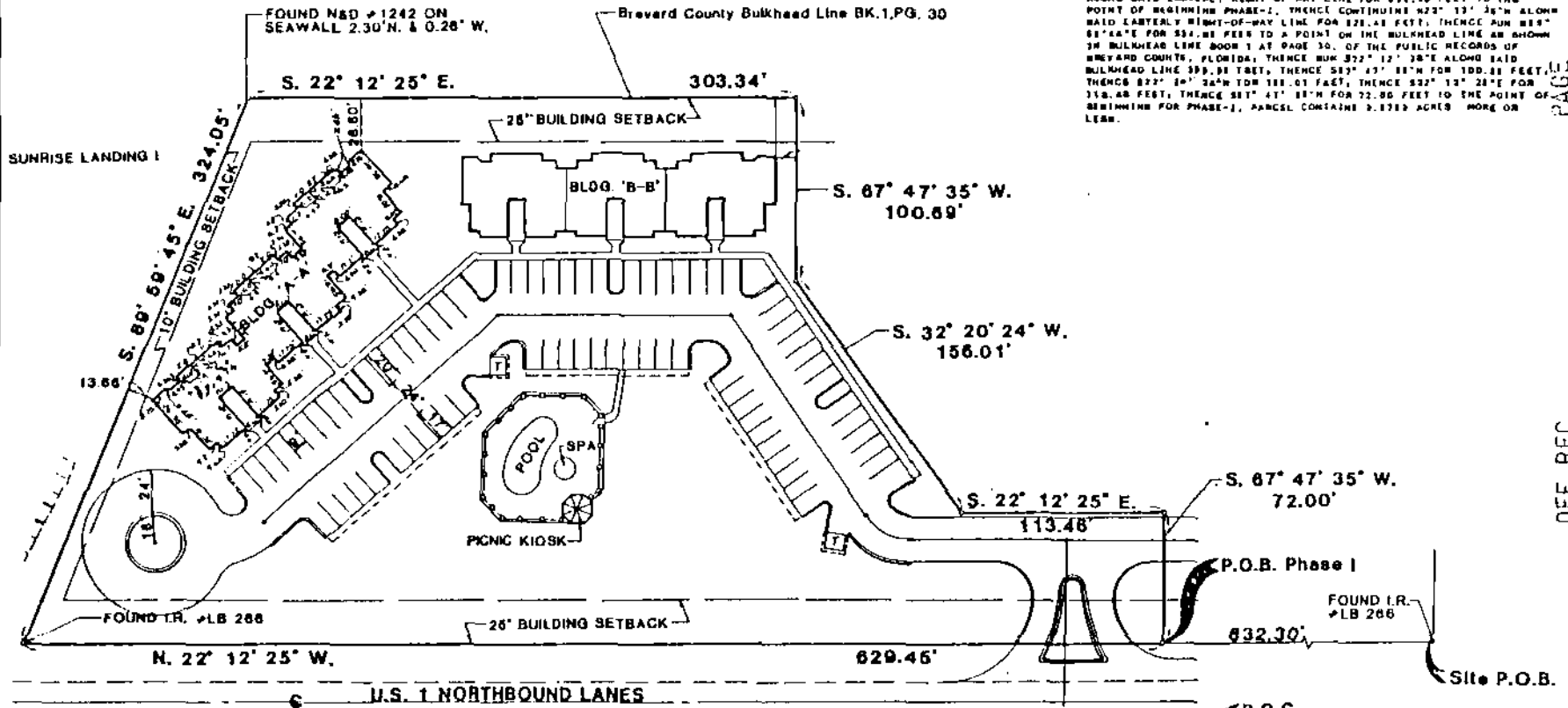
SUNRISE VILLAGE, A CONDOMINIUM



INDIAN RIVER

DESCRIPTION PHASE I

A PARCEL OF LAND LYING IN FRACTIONAL SECTION 18, TOWNSHIP 28 SOUTH, RANGE 16 EAST, BREVARD COUNTY, FLORIDA. THE SAME BEING MORE PARTICULARLY DESCRIBED AS FOLLOWS, COMMENCE AT THE INTERSECTION OF THE SOUTH LINE OF SAID SECTION 18 WITH THE EASTERLY RIGHT-OF-WAY LINE OF STATE ROAD 8 (HIGHWAY 1) AS SAID RIGHT-OF-WAY LINE EXISTED ON DECEMBER 19, 1922, THENCE RUN N22° 12' 28" W ALONG SAID EASTERLY RIGHT-OF-WAY LINE FOR 1518.90 FEET TO THE POINT OF BEGINNING OF THE SITE, THENCE CONTINUE N22° 12' 28" W ALONG SAID EASTERLY RIGHT-OF-WAY LINE FOR 832.30 FEET TO THE POINT OF BEGINNING PHASE-I, THENCE CONTINUE N22° 12' 28" W ALONG SAID EASTERLY RIGHT-OF-WAY LINE FOR 828.48 FEET, THENCE RUN S67° 47' 35" E 100.69 FEET TO A POINT ON THE BULKHEAD LINE AS SHOWN IN BULKHEAD LINE BOOK 1 AT PAGE 30, OF THE PUBLIC RECORDS OF BREVARD COUNTY, FLORIDA; THENCE RUN S32° 20' 24" W 156.01' ALONG SAID BULKHEAD LINE 399.31 FEET, THENCE S17° 25' 18" W FOR 100.22 FEET, THENCE S22° 12' 25" W 113.48 FEET, THENCE S22° 12' 25" W FOR 118.48 FEET, THENCE S17° 41' 18" W FOR 72.86 FEET TO THE POINT OF BEGINNING FOR PHASE-I, PARCEL CONTAINS 2.1723 ACRES MORE OR LESS.



PAGE 4321
OFF. REC. 2983



PHOENIX ENGINEERING ASSOCIATES, INC.
2555 TEMPLE TRAIL, SUITE 202
WINTER HARBOR, FL 32784 (407) 740-7202

Accuright Surveys
3012 E. ADKINSON ST.
ORLANDO, FL. 32803
PHONE (407) 884-8314

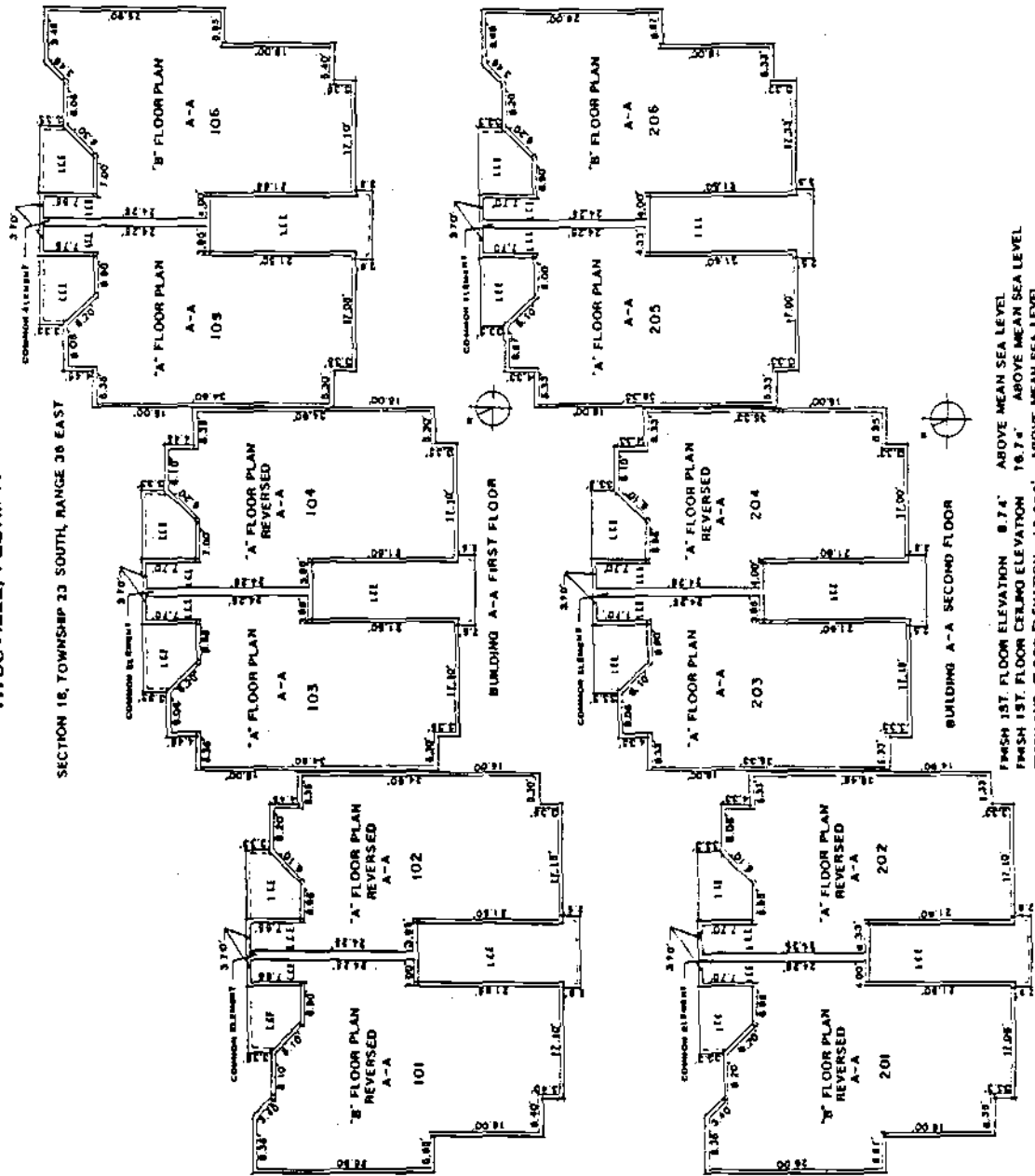
Site P.O.B. N. 22° 12' 25" W. 1810.00'
E'LY R/W Line
P.O.C.
South Line S18, T23 S, R 36 E

EXHIBIT "B"
SHEET 2 of 12 SHEETS

18/19
13/24

SUNRISE VILLAGE, A CONDOMINIUM
TITUSVILLE, FLORIDA

SECTION 16, TOWNSHIP 23 SOUTH, RANGE 30 EAST



FINISH 1ST. FLOOR ELEVATION 8.74' ABOVE MEAN SEA LEVEL
 FINISH 1ST. FLOOR CEILING ELEVATION 16.74' ABOVE MEAN SEA LEVEL
 FINISH 2ND. FLOOR ELEVATION 17.996' ABOVE MEAN SEA LEVEL
 FINISH 2ND. FLOOR CEILING ELEVATION 28.996' ABOVE MEAN SEA LEVEL
 L.C.E. DESIGNATES LIMITED COMMON ELEMENT

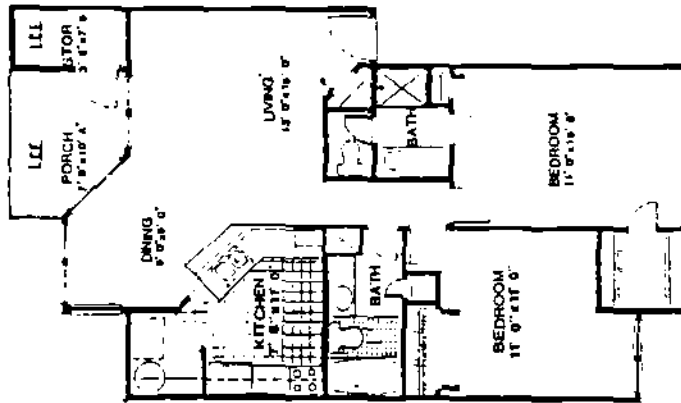


FUGLEBERG KOCH ASSOCIATES
ARCHITECTS AND PLANNERS
ORLANDO, FLORIDA 32803

EXHIBIT
SHEET 6 OF 12

**SUNRISE VILLAGE, A CONDOMINIUM
TITUSVILLE FLORIDA**

SECTION 18, TOWNSHIP 23 SOUTH, RANGE 36 EAST

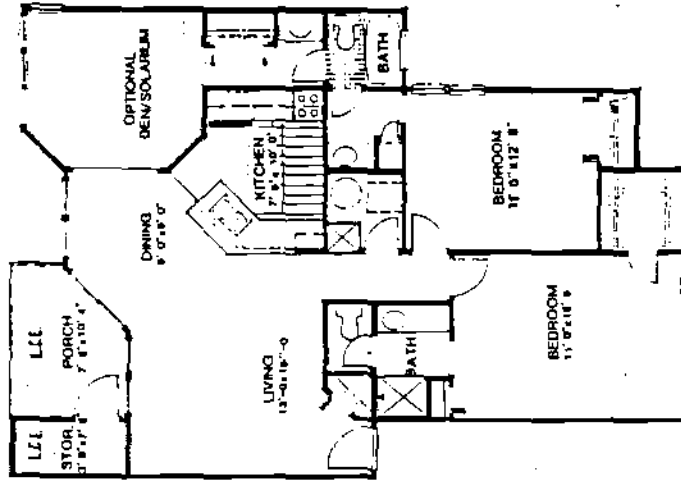


FLOOR PLAN

UNIT A

TOTAL SQ. FT. 1079.84

SQUARE FOOTAGES CALCULATED ON END UNITS (A) ARE FROM
OUTSIDE OF EXTERIOR WALLS TO CENTER LINE OF PARTY WALLS
SQUARE FOOTAGES CALCULATED ON INTERIOR UNITS (B) ARE
FROM CENTER LINE TO CENTER LINE OF PARTY WALLS.
SQUARE FOOTAGE OF UNITS EXCLUDE L.C.E.
L.C.E. DE SORAYES LIMITED COMMON ELEMENT



FLOOR PLAN

UNIT B

TOTAL SQ. FT. 1263

NO UNIT INCLUDES THE PERIMETER
WALLS SURROUNDING THE UNIT AND
THE UNDECORATED AND/OR
UNFINISHED SURFACES OF SUCH
PERIMETER WALL.

FOR INFORMATION
**FUGLEBERG KOCH ASSOCIATES
ARCHITECTS AND PLANNERS
ORLANDO, FLORIDA 32803**

**EXHIBIT
SHEET 12 OF 12**